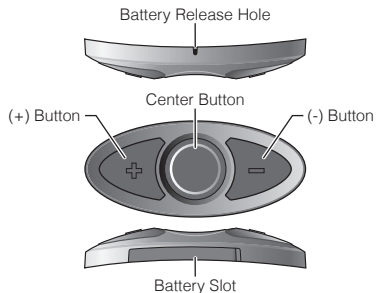
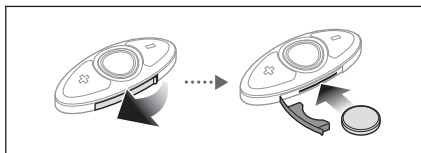


RC3 Quick Start Guide



Getting Started



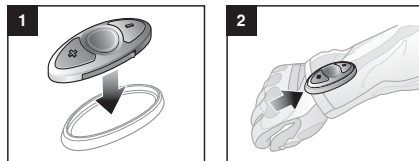
Note:

- When closing the battery slot, insert both ends of the rubber first.
- To remove the battery, insert a paper clip through the Battery Release Hole.

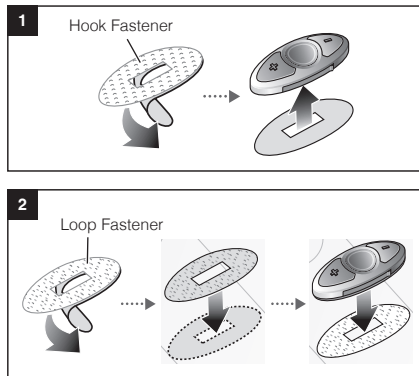
Installation

There are three ways of installing the RC3.

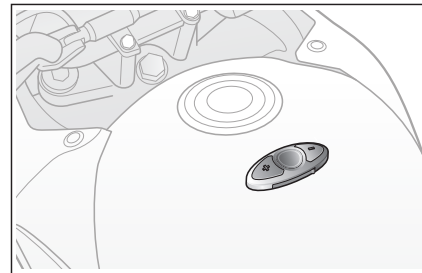
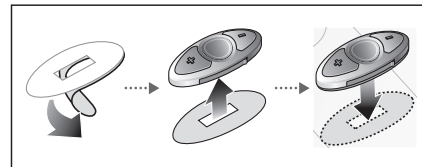
Using the Clip



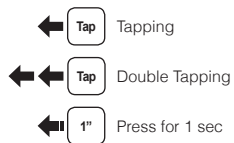
Using the Hook and Loop Fasteners



Using the Adhesive Tape



Button Operation



Power On/Off

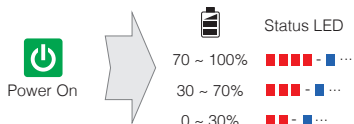
Power On



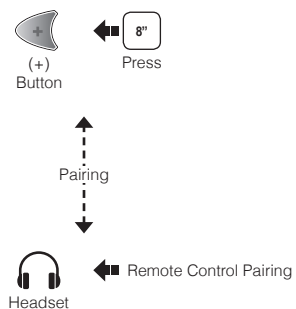
Deep Sleep



Battery Check



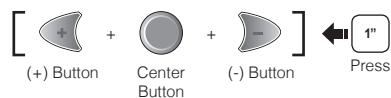
Bluetooth Pairing



Note:

- You can control the headset using the RC3 only after you pair them together.
- The RC3 supports Sena headsets with Bluetooth 4.1.

Factory Reset



Headset Control

To control your headset using the RC3, please refer to the Quick Reference Guide for button operations on functions such as phone, music, and intercom.



Sena Technologies, Inc.
www.sena.com
Customer Support: support.sena.com
E-mail: support@sena.com