

HYPHERPRO

STEERING DAMPER MOUNTING KIT

for

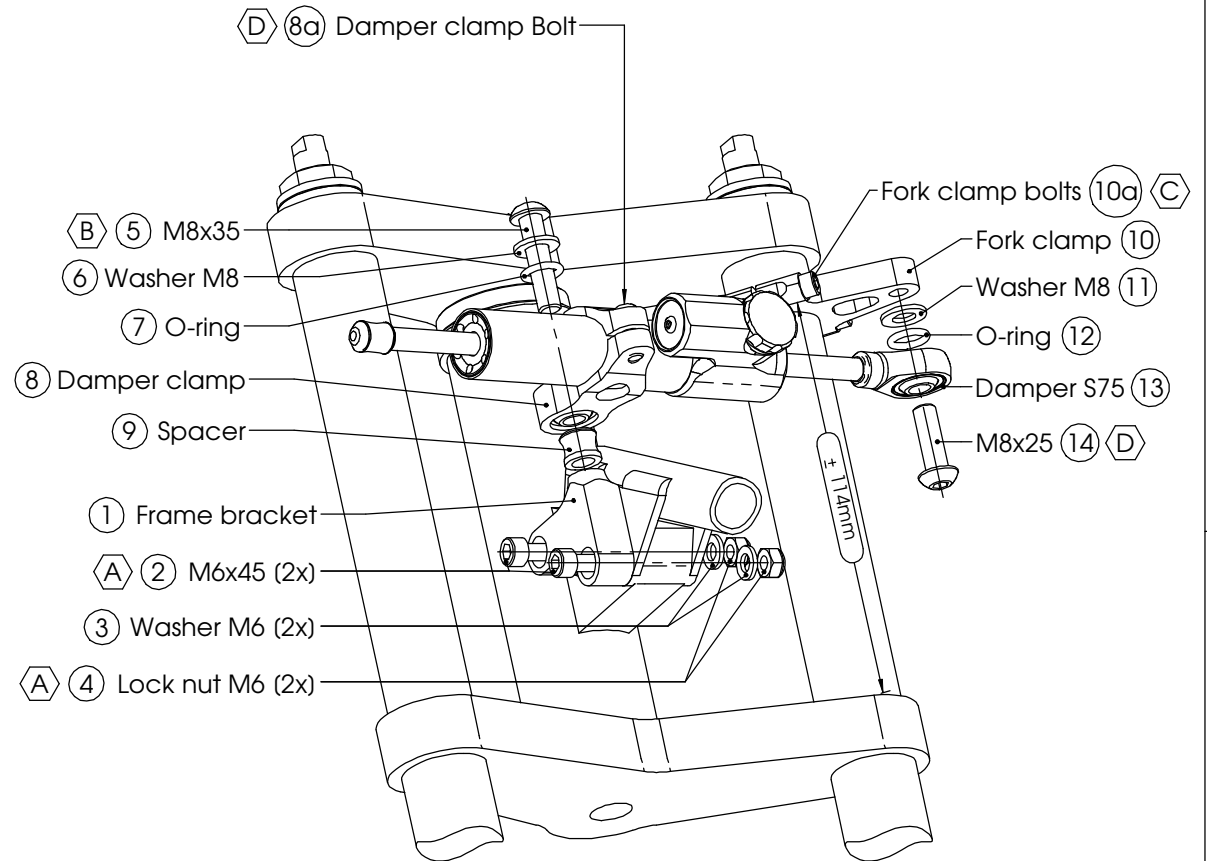
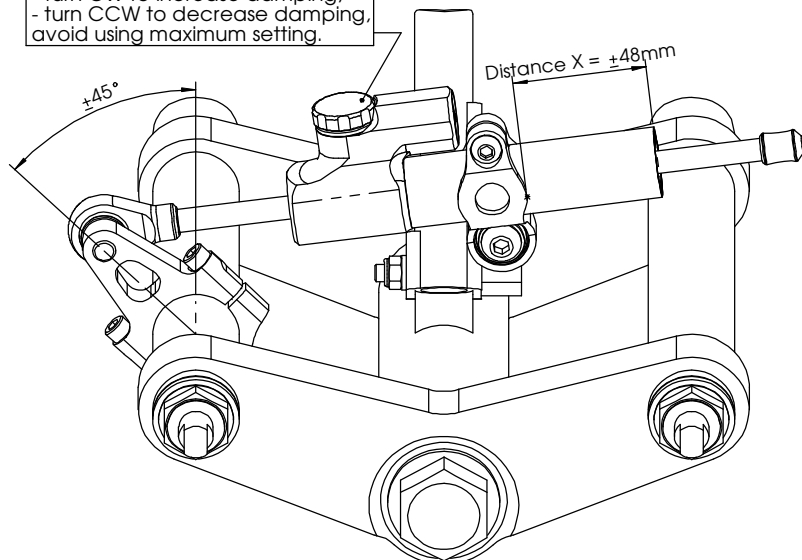
Honda NSF100 RACE Model 2006>

MK-H001-T002 PART LIST

SD stroke 75	1	Lock nut M6	2
Tube Clamp Type 1	1	Washer M6 ϕ 12	2
O-Ring	2	Washer M8 ϕ 16	2
Fork Clamp ϕ 30	1	Spacer Type 1	1
Frame Bracket (FRMK 21)	1	-	-
M6x45	2	-	-
M8x25 Button head	1	-	-
M8x35 Button head	1	-	-

ALL IDEAS, DESIGNS, ARRANGEMENTS AND PLANS INDICATED OR REPRESENTED BY THIS DRAWING ARE OWNED BY HYPERPRO AND WERE CREATED, EVOLVED AND DEVELOPED FOR USE ON AND IN CONNECTION WITH THE SPECIFIC PROJECT. NONE SUCH IDEAS, DESIGNS, ARRANGEMENTS OR PLANS SHALL BE USED BY OR DISCLOSED TO ANY PERSON, FIRM OR CORPORATION FOR ANY PURPOSE WHATSOEVER WITHOUT THE WRITTEN PERMISSION OF HYPERPRO.

Damping adjustment knob:
- turn CW to increase damping,
- turn CCW to decrease damping,
avoid using maximum setting.



1
of 2

Ⓐ 5-9Nm / 44-80Lbs.In / 4.0-6.4Lbs.Ft

Ⓒ 8Nm / 70Lbs.In / 5.9Lbs.Ft

Ⓑ 14-17Nm / 124-150Lbs.In / 10.3-12.5Lbs.Ft

Ⓓ 6Nm / 53Lbs.In / 4.4Lbs.Ft

HYPERPRO

STEERING DAMPER MOUNTING KIT

for

Honda NSF100 RACE Model 2006>

MK-HO01-T002 INSTALLATION INSTRUCTIONS

In general:

HYPERPRO can not be held responsible in any way for any form of physical, material, financial or other damage arising from use, assembly or overhaul of HYPERPRO products.
HYPERPRO reserves the right to make changes without prior notice.

This product is ONLY TO BE INSTALLED BY A PROFESSIONAL MECHANIC.

This product is only to be used for the motorcycle brand, model and year stated specifically on top of the pages of this manual.

DO NOT attempt to install this product on motorcycles from any different brand, model and/or year than stated on the pages of this manual.

DO NOT use this kit for cars, boats, jet-skies, snowmobiles, ATV's, aircraft, hovercrafts or any other vehicle and/or purpose.

HYPERPRO steering dampers are FOR RACE USE ONLY, NOT FOR HIGHWAY USE!

Before installation:

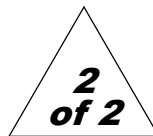
- Please read the entire manual carefully before starting the installation!
- Check if you have all the tools required. Good tools are a must.
- Protect your bike at the most important places in and around the work area (e.g. tank, fairing, frame, etc.), with a blanket, towel or similar.

During installation:

- Check all operations and parts carefully before, during and after performing each step.
- Clean all surfaces that are required for fitting parts together or for applying self adhesives or loctite, thoroughly with contact cleaner or another degreaser, unless otherwise stated.
- Be careful not to damage or scratch any part of your bike.
- ALWAYS work relaxed and concentrated!! It is very easy to damage something or make a mistake.

After installation:

- Check and make sure that there is no contact between any part of the steering damper kit and any part of the motorcycle. The kit should not hit anything. Steering movement should not be limited by the steering damper. If the steering movement is limited, adjust the position of the tube in the clamp until steering movement is normal again. Do not forget to tighten the clamp bolt again!
- ALWAYS check the steering movement and feeling before each ride!
- FIRST RIDES: Start with the damper turned fully open (turn adjuster knob fully counter clockwise). Start adjusting in between rides with steps of MAX. 2 CLICKS (0.25 TURN) EACH TIME, until the damper is working satisfactory for your riding style.
- NEVER USE MAXIMUM SETTING, ALWAYS OPEN AT LEAST 2 CLICKS (0.25 TURN).
- WARNING ! DAMPER HAS AN ACTIVE / SPEEDSENSITIVE DAMPING SYSTEM;
 - Steering with NORMAL MOVEMENT should be FREE !!
 - Steering with FAST MOVEMENT should be CONTROLLED BY DAMPER !!
- HYPERPRO uses a special seal to reduce friction. The seal uses an oil film to work properly. It is normal that some oil can appear on the pistonrod.
- Damper works with oil: DAMPING CAN BE HARDER AT LOWER TEMPERATURES!



Step 1: install the frame bracket

Install the frame bracket using:

- Tank bracket (1)
- 2x Bolt M6x45 (2)
- 2x Washer M6 Ø 12 (3)
- 2x Lock nut M6 (4)

Remove the 2 standard M6 bolts and nuts from the cockpit frame mounting points.

Install the frame bracket (1) to the right-hand side, using the 2 supplied M6x45 bolts (2) and the supplied M6 washers (3) and lock nuts (4) as shown in the right picture on page 1.

Tighten the bolts and nuts with a torque of approx. 5-9Nm/44-80Lbs.In/4.0-6.4Lbs.Ft

Step 2: install the damper clamp

Install the damper clamp using:

- Bolt M8x35 (5)
- Washer M8 Ø 16 (6)
- O-Ring (7)
- Tube Clamp Type 1 (8)
- Spacer Type 1 (9)

Put the assembly together as shown on page 1: use the M8x35 bolt (5) to install the washer (6), O-ring (7), damper clamp (8) and spacer (9) to the M8 hole in the frame bracket (1).

Tighten the bolt with a torque of approx. 14-17Nm/124-150Lbs.In/10.3-12.5Lbs.Ft.

Step 3: install the fork clamp

Install the fork clamp assembly using:

- Fork clamp assembly (10)

Disassemble the fork clamp (10). Re-assemble the fork clamp around the left-hand fork leg.

Set the height to ±114mm between the lower yoke and the fork clamp, and the angle at ±45° from the riding direction.

Tighten the fork clamp bolts (10a) evenly to a torque of approx. 8Nm/70Lbs.In/5.9Lbs.Ft.

Step 4: installing the steering damper

Install the steering damper using:

- Washer M8 Ø 16 (11)
- 1x O-ring (12)
- Steering damper, stroke 75 (13)
- Bolt M8x25 button head (14)

Shove the damper (14), with the knob-end first, through the clamp until the ball-joint can be fitted to the fork clamp. Use the washer (11), O-ring (12) and M8 bolt (14) to fit the ball-joint to the fork clamp and tighten the bolt with a torque of approx. 14-17Nm/124-150Lbs.In/10.3-12.5Lbs.Ft.

Position the damper tube until the distance "X" stated on page 1 is reached, then tighten the damper clamp bolt (8a) with a torque of approx. 6Nm/53Lbs.In/4.4Lbs.Ft. Check if the damper is level horizontally and aligned to the bike. Check if the damper does not touch anything (e.g. tank) when steering from left to right. Check if the bike can make it's full steering angle from left to right.